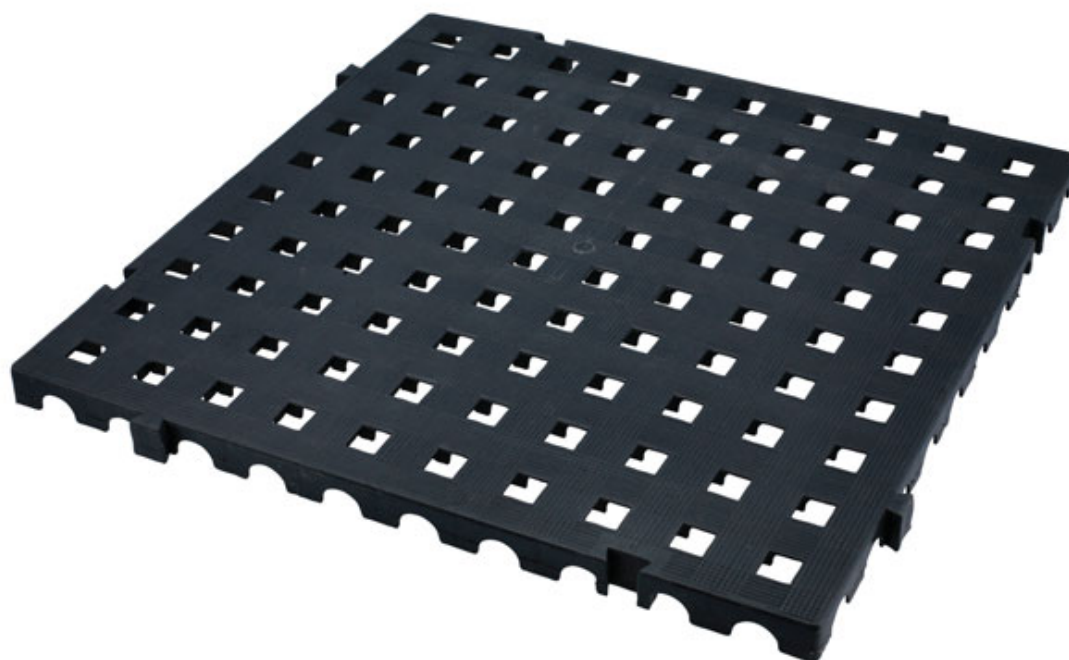


## Insulating Floor Tiles – set of 4

A four piece set of interlocking and insulating floor tiles, each of which are 500mm x 500mm (totalling 1m<sup>2</sup> size) which can be joined together to cover any flat surface area when working on EV and Hybrid vehicles. The tiles can easily be cut or re-arranged to suit the working area; individual tiles are also available (Part No. 62095) to extend the insulated area.



### Additional Information

- Made from high impact polyethylene (PE).
- Tile dimensions: 500mm x 500mm x 25mm (4 tiles creates 1 sq mtr).
- Can be arranged/re-arranged into any pattern to suit the area to be covered.
- Easy to cut as necessary to adapt to any space.
- Individual tiles available to enlarge required area (Part No. 62095).

<http://lasertools.co.uk/product/8746>

